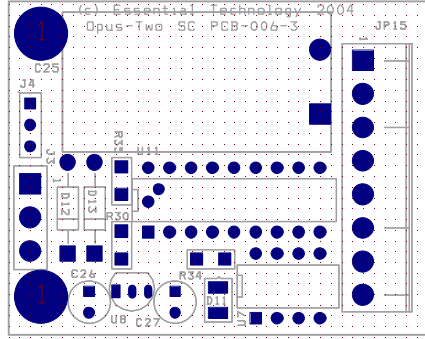


SC Top View Pinouts

Programming only hdr

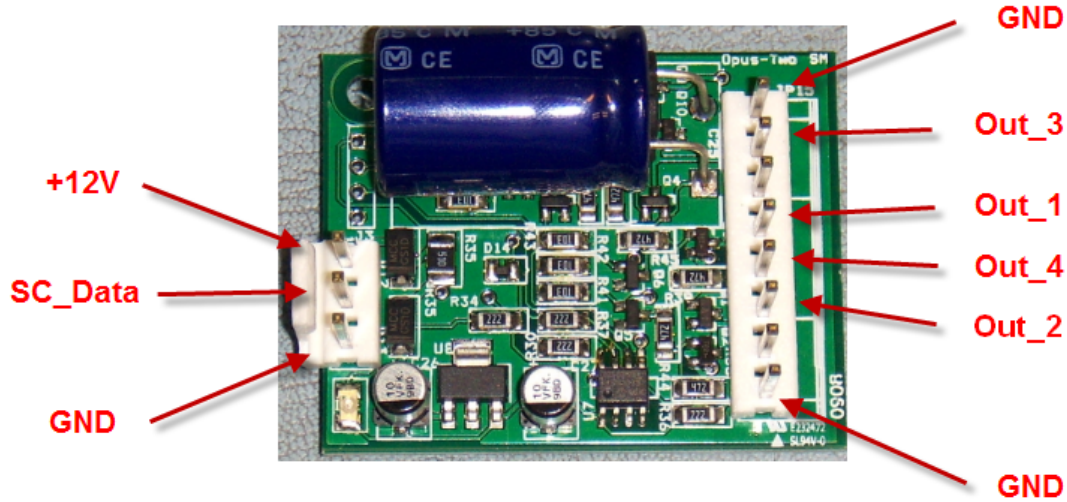
Red 1 - V+
 Yellow 2 - SC_Data
 Black 3 - GND



- 1 - GND
- 2 - DP_3
- 3 - SW - Input
- 4 - DP_1
- 5 - LED { DP_4 }
- 6 - DP_2
- 7 - SW1 - Input
- 8 - GND

NB: Be sure that SC daisy chain never gets connected so that V+ ends up on SC_Data. Recommend a 4 pin header plug with a keying insert to prevent that.

This is the original SC digital version, supporting 3 outputs per unit. While 4 outputs were possible, only 3 were ever used.



SC Digital, 4 bit version